

1

Metis (XVI)

26E00F



Named after the second-generation Titan who became Zeus' first wife. She gave Zeus the potion that caused Cronus to vomit out the other gods, and was swallowed in fly form by Zeus to void a prophesy that her son would overthrow him.

Discovered in 1979 by Synnott (Voyager 1)

Group: Inner

Size: Small ($60 \times 40 \times 34$ km, 3.60×10^{16} kg)

Orbit: 0.3d (prograde, regular)



Location: Con Bar: on the white junction box on the left-hand side of the column between the first and second room sections

2

Adrastea (XV)

1657F5



A captured D-type asteroid, named after the Cretan nymph who fostered the infant Zeus in secret, to protect him from his father Cronus.

Discovered in 1979 by Jewitt (Voyager 2)

Group: Inner

Size: Tiny ($20 \times 16 \times 14$ km, 2.00×10^{15} kg)

Orbit: 0.3d (prograde, regular)



Location: Con Desk area: on a mirror to the left of the doors leading to the restaurant

3

Amalthea (V)

17963F



Holds the title of "reddest object in the solar system". The Amalthea Gossamer Ring is formed from material ejected from its surface. Named after another of Zeus' foster-mothers, who may be a remnant of an older nurturing goddess.

Discovered in 1892 by Barnard

Group: Inner

Size: Medium ($250 \times 146 \times 128$ km, 2.08×10^{18} kg)

Orbit: 0.5d (prograde, regular)

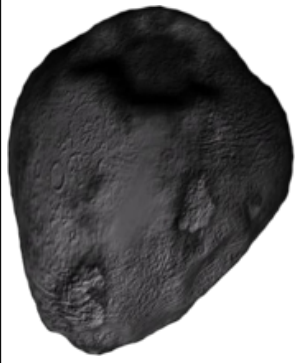


Location: Green Room door sign

4

Thebe (XIV)

125E88



A captured C-type asteroid, Thebe forms the Thebe Gosammer Ring from dust ejected from its surface. Several Greek figures share the name Thebe, which is the root inspiration for the city name Thebes.

Discovered in 1979 by Synnott (Voyager 1)

Group: Inner

Size: Medium ($116 \times 98 \times 84$ km, 4.30×10^{17} kg)

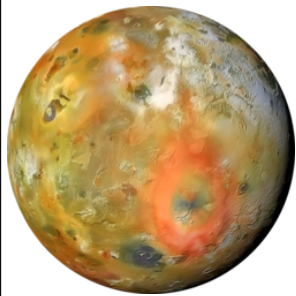
Orbit: 0.68d (prograde, regular)

Location: Registration area: on the right-hand door of the pair leading to the Stairwell

5

Io (I)

15AD7C



The most seismically-active body in the solar system, with a thick sulphur dioxide atmosphere. It is named after a priestess of Hera, who in revenge was turned by Hera into a beautiful white heifer after Zeus (inevitably) seduced her.

Discovered in 1610 by Galilei

Group: Galilean

Size: $1.2 \times M_{\oplus}$ ($3660.0 \times 3637.4 \times 3630.6$ km, 8.93×10^{22} kg)

Orbit: 1.77d (prograde, regular)



Location: Art Show door sign

6

Europa (II)

1D4FA4



One of the best potential hosts for extra-terrestrial life (attempt no landing there), Europa has a massive ocean under its frozen surface. It is named after the mother of King Minos, who was seduced by Zeus in the form of a bull.

Discovered in 1610 by Galilei

Group: Galilean

Size: $0.65 \times M_{\oplus}$ (3121.6 km, 4.80×10^{22} kg)

Orbit: 3.55d (prograde, regular)



Location: Registration tables sign

7

Ganymede (III)

A248A9



Larger than Mercury, though less than half the mass due to being half water. Named after the beautiful Trojan boy who Zeus (in the form of an eagle) abducted to serve as the Olympian gods' cup-bearer.

Discovered in 1610 by Galilei

Group: Galilean

Size: $2 \times M_{\oplus}$ (5262.4 km, 1.48×10^{23} kg)

Orbit: 7.15d (prograde, regular)

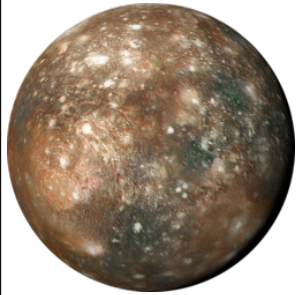


Location: Workshops door sign

8

Callisto (IV)

940BFE



Unlike the other Galilean moons, Callisto is tidally locked and is not in a resonant orbit, so it receives practically no tidal heating. It also appears to be undifferentiated internally. A follower of Artemis, Callisto was transformed into a bear by Hera after Zeus 'seduced' her while wearing Artemis' form.

Discovered in 1610 by Galilei

Group: Galilean

Size: $1.5 \times M_{\oplus}$ (4820.6 km, 1.08×10^{23} kg)

Orbit: 16.69d (prograde, regular)



Location: Dealers' Room door sign

9

Themisto (XVIII)

A3D5BB



This moon's orbit wasn't well-defined, so it was lost for 25 years, being rediscovered by Jewett, Fernandez, and Eugene in 2000. Named after a river nymph who was yet another of Zeus' sexual conquests.

Discovered in 1975 by Kowal & Roemer

Group: Themisto

Size: Tiny (8 km, 6.90×10^{14} kg)

Orbit: 129.87d (prograde, eccentric, highly inclined, wide)

Location: Mezzanine: on a wall-mounted sign by the doors to the SECC

10

Leda (XIII)

7193C6



A captured asteroid, named after the Aetolian princess who became a queen of Sparta, was impregnated by Zeus (in swan form) on her wedding night, and laid two eggs which eventually hatched the famous Helen, Clytemnestra, Castor, and Pollux.

Discovered in 1974 by Kowal

Group: Himalia

Size: Tiny (16 km, 6.00×10^{15} kg)

Orbit: 240.82d (prograde, inclined, wide)

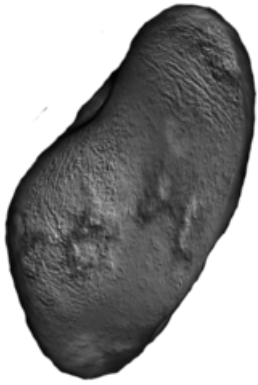


Location: Page 7 of the Programme Book

11

Himalia (VI)

1A98DA



Jupiter's largest irregular-shaped moon, considerably smaller than Europa, the next smallest moon. It's named after yet another of Zeus' 'conquests', a nymph from Rhodes.

Discovered in 1904 by Perrine

Group: Himalia

Size: Medium (170 km, 6.70×10^{18} kg)

Orbit: 250.23d (prograde, inclined, wide)

Location: Mezzanine: on the wall-mounted pamphlet display outside Art Show

12

Lysithea (X)

3822BA



A captured D-type asteroid, named after one of Oceanus' daughters that Zeus added to his list of lovers.

Discovered in 1938 by Nicholson

Group: Himalia

Size: Small (36 km, 6.30×10^{16} kg)

Orbit: 259.89d (prograde, inclined, wide)



Location: Mezzanine: on the push-plate of the right-hand fire exit door at the far end

13

Elara (VII)

FF3CE3



Named after a mortal princess: Zeus fell in love with her and hid her from Hera under the Earth; she died giving birth to the giant he sired on her.

Discovered in 1905 by Perrine

Group: Himalia

Size: Medium (86 km, 8.70×10^{17} kg)

Orbit: 259.64d (prograde, inclined, wide)

Location: Con Bar: on the first of the retracted room dividers coming from the labelled door

14

Dia (LIII)

BD6385

Initial observations of this moon were not followed up: it was lost after its initial discovery, but eventually reacquired after a decade. Named after a Perrhaebian princess who was seduced by Zeus in the form of a stallion.

Discovered in 2001 by Sheppard et al.

Group: Himalia

Size: Tiny (4 km, 9.00×10^{13} kg)

Orbit: 287.93d (prograde, eccentric, inclined, wide)

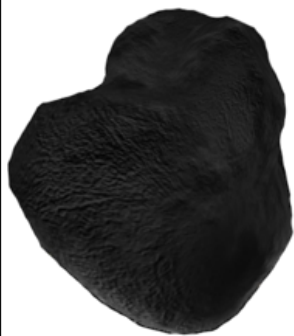


Location: Stairwell: on the window beside the fire exit, *under* the stairs

15

Carpo (XLVI)

BD3614



One of only three moons which is in a solitary orbit. Despite sounding like a lost Marx Brother, Carpo is named after one of the Horai, Zeus' daughters who were the goddesses of the seasons and divisions of time.

Discovered in 2003 by Sheppard et al.

Group: Carpo

Size: Tiny (3 km, 4.50×10^{13} kg)

Orbit: 458.62d (prograde, eccentric, highly inclined, wide)

Location: Con Bar: on the right-hand window of the third room section

16

Valetudo (LXII)

286F3A

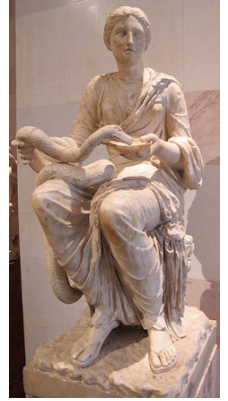
One of only three moons which is in a solitary orbit. It's named after Jupiter's great-granddaughter, the Goddess of Health and Hygiene

Discovered in 2016 by Sheppard et al.

Group: Valetudo

Size: unknown (1 km, (unknown) kg)

Orbit: 532d (prograde, eccentric, inclined, wide)



Location: Stairwell: on the bottom glass panel at the right-hand side of the doors leading to the balcony area

17

Euanthe (XXXIII)

4896E0



Named after one of Zeus' partners, the mother of the Graces.

Discovered in 2002 by Sheppard et al.

Group: Ananke

Size: Tiny (3 km, 4.50×10^{13} kg)

Orbit: 598.09d (retrograde, eccentric, inclined, very wide)

Location: Page 11 of the *Journal of PseudoScience*, vol. 2

18

Helike (XLV)

F37142



Named after one of the nymphs that fostered Zeus on Crete.

Discovered in 2003 by Sheppard et al.

Group: Ananke

Size: Tiny (4 km, 9.00×10^{13} kg)

Orbit: 601.4d (retrograde, inclined, very wide)

Location: Con Desk area: on one of the windows looking into Alternate Programme

19

locaste (XXIV)

CC26D1



Named after Jocasta, the mother/wife of Oedipus, who despite all *that* drama was fortunate enough to have no contact with Zeus (or Jupiter) in any form.

Discovered in 2001 by Sheppard et al.

Group: Ananke

Size: Tiny (5 km, 1.90×10^{14} kg)

Orbit: 609.43d (retrograde, eccentric, inclined, very wide)



Location: Con Bar: on a white junction box beside the door in the third room section

20

Praxidike (XXVII)

CCAC34



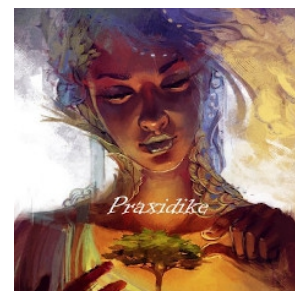
Probably a captured C-type asteroid, Praxidike is named after the Greek Goddess of Judicial Punishment.

Discovered in 2001 by Sheppard et al.

Group: Ananke

Size: Tiny (7 km, 4.30×10^{14} kg)

Orbit: 613.9d (retrograde, inclined, very wide)



Location: Stairwell: at the top right of the glass panel beside the lift doors

21

Harpalyke (XXII)

65F735



Named after Harpalyce, the daughter/wife of King Clymenus of Arcadia, who was turned into a bird by the Gods when she prayed to them for help (after her father/husband tried to kill her for serving up her son/brother for dinner).

Discovered in 2001 by Sheppard et al.

Group: Ananke

Size: Tiny (4 km, 1.20×10^{14} kg)

Orbit: 624.54d (retrograde, eccentric, inclined, very wide)

Location: Art Show: on the back of the first board on the left as you went in

22

Hermippe (XXX)

8C01DA



Named after the wife of Orchomenus, one of Zeus' sons, who also had a child by Poseidon, and *may* also have had an affair with Zeus.

Discovered in 2002 by Sheppard et al.

Group: Ananke

Size: Tiny (4 km, 9.00×10^{13} kg)

Orbit: 629.81d (retrograde, eccentric, inclined, very wide)



Location: Games Room: on the left-hand side of the sideboard

23

Thyone (XXIX)

ABEDA0



Named for one of the alternate names of Semele, the youngest daughter of the Phoenician hero Cadmus and Harmonia, who became the mother of Dionysus after an affair with Zeus.

Discovered in 2002 by Sheppard et al.

Group: Ananke

Size: Tiny (4 km, 9.00×10^{13} kg)

Orbit: 639.8d (retrograde, eccentric, inclined, very wide)



Location: Convention Bar door sign

24

Ananke (XII)

408C27



Possibly a captured P-type asteroid, Ananke also shows some traces of water. It's named after the Goddess of Necessity and Inevitability, who after 'help' from Zeus gave birth to the Fates (but apparently not Invention).

Discovered in 1951 by Nicholson

Group: Ananke

Size: Small (28 km, 3.00×10^{16} kg)

Orbit: 640.38d (retrograde, highly eccentric, inclined, very wide)



Location: Ops & Gopher Hole door sign

25

Aitne (XXXI)

9224CE



Aitne is named after the Personification of the Volcano Etna, who had two sons by Zeus: the twin Sicilian gods of geysers.

Discovered in 2002 by Sheppard et al.

Group: Carme

Size: Tiny (3 km, 4.50×10^{13} kg)

Orbit: 679.64d (retrograde, highly eccentric, inclined, very wide)



Location: Con Desks area sign

26

Taygete (XX)

C8FE95



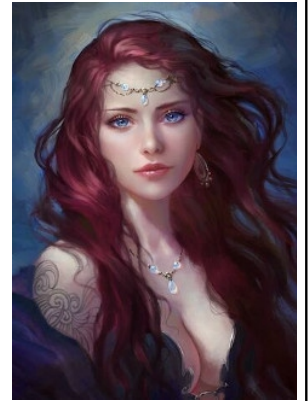
Named after one of the Pleiades (daughters of the Titan Atlas) and, with Zeus, the mother of Lacedaemon, which later became known as Sparta.

Discovered in 2001 by Sheppard et al.

Group: Carme

Size: Tiny (5 km, 1.60×10^{14} kg)

Orbit: 686.67d (retrograde, highly eccentric, inclined, very wide)



Location: Con Desk area: on a mirror near the entrance

27

Chaldene (XXI)

52076C



Named after another of Zeus' 'special friends', the mother of the hero Solymos.

Discovered in 2001 by Sheppard et al.

Group: Carme

Size: Tiny (4 km, 7.50×10^{13} kg)

Orbit: 699.33d (retrograde, eccentric, inclined, very wide)

Location: Registration area: on the "Castle 1" door sign

28

Erinome (XXV)

C0A3A9



Named after a daughter of Celes; Erinome was mind-controlled by Venus into falling in love with Jupiter.

Discovered in 2001 by Sheppard et al.

Group: Carme

Size: Tiny (3 km, 4.50×10^{13} kg)

Orbit: 711.96d (retrograde, eccentric, inclined, very wide)

Location: Con Bar: on the wall-mounted pamphlet display beside the doors in the second section

29

Aoede (XLI)

55DEC4



Named after Zeus and Mnemosyne's daughter the Muse of Song, one of the three original Muses.

Discovered in 2003 by Sheppard et al.

Group: Pasiphae

Size: Tiny (4 km, 9.00×10^{13} kg)

Orbit: 714.66d (retrograde, highly eccentric, inclined, very wide)

Location: Alternate Programme Room door sign

30

Kalyke (XXIII)

4B689C



Named after Calyce, the mother of either Aethlius or Endymion (in which case Aethlius is her husband); in either case, Zeus was the father.

Discovered in 2001 by Sheppard et al.

Group: Carme

Size: Tiny (5 km, 1.90×10^{14} kg)

Orbit: 721.02d (retrograde, eccentric, inclined, very wide)

Location: Stairwell: on the east-facing windows beside the emergency exit at the foot of the stairs

31

Carme (XI)

7AD712



Named after a mortal upon whom Zeus sired Britomartis, Goddess of Hunting and Mountains.

Discovered in 1938 by Nicholson

Group: Carme

Size: Small (46 km, 1.30×10^{17} kg)

Orbit: 702.28d (retrograde, eccentric, inclined, very wide)

Location: Registration area: at the bottom of an upper pane of the windows, at the left of the seating area

32

Callirrhoe (XVII)

BCB5E6



Originally designated as an asteroid in 1999, Callirrhoe was confirmed as a moon a year later. It was used as a navigational target by New Horizons. It's named after yet another of Zeus' 'special friends', the daughter of the river god Achelous.

Discovered in 2000 by Spahr, Scotti

Group: Pasiphae

Size: Tiny (9 km, 8.70×10^{14} kg)

Orbit: 727.11d (retrograde, eccentric, inclined, very wide)

Location: Con Desk area: on one of the large windows

33

Eurydome (XXXII)

4E00D6



Named after an alternative (to Eurynome) candidate for the Graces' mother; Zeus still being the father.

Discovered in 2002 by Sheppard et al.

Group: Pasiphae

Size: Tiny (3 km, 4.50×10^{13} kg)

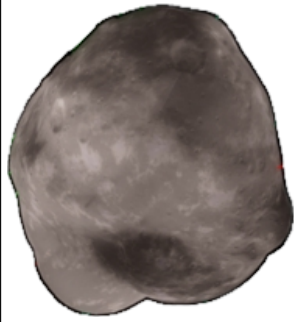
Orbit: 723.36d (retrograde, highly eccentric, inclined, very wide)

Location: Con Bar: on the right-hand side of the closed room divider, where the Lally Wall ended up

34

Eukelade (XLVII)

5F6082



Named after one of the lesser-known Muses.

Discovered in 2003 by Sheppard et al.

Group: Carme

Size: Tiny (4 km, 9.00×10^{13} kg)

Orbit: 735.2d (retrograde, eccentric, inclined, very wide)

Location: Registration area: at the top of a lower pane of the windows, near the right-hand side of the seating area

35

Pasiphae (VIII)

2FCD53



Despite its early discovery, Pasiphae remained un-named until 1975, when it was named after the immortal daughter of the God Helios; wife of Minos and mother of the Minotaur (remember, Minos gets bovine genes from *his* mother's dalliance with Bull!Zeus).

Discovered in 1908 by Melotte

Group: Pasiphae

Size: Medium (60 km, 3.00×10^{17} kg)

Orbit: 739.8d (retrograde, highly eccentric, inclined, very wide)



Location: Con Desk area: on one of the windows looking into Main Programme

36

Hegemone (XXXIX)

A60B6B

Named after Zeus' daughter, the Grace of Autumn.

Discovered in 2003 by Sheppard et al.

Group: Pasiphae

Size: Tiny (3 km, 4.50×10^{13} kg)

Orbit: 745.5d (retrograde, highly eccentric, inclined, very wide)



Location: Mezzanine: on the door leading to the SECC, at the far end

37

Arche (XLIII)

EE1406

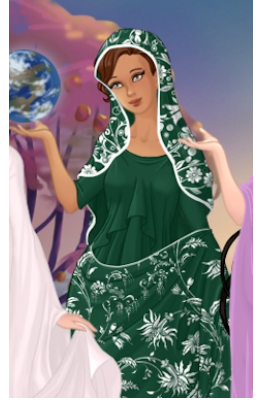
Named after Zeus and Mnemosyne's daughter the Muse of The Beginning, the first Muse added to the original three (early enough to count as one of "the original four").

Discovered in 2002 by Sheppard et al.

Group: Carme

Size: Tiny (3 km, 4.50×10^{13} kg)

Orbit: 746.19d (retrograde, inclined, very wide)



Location: Main Programme Room door sign

38

Isonoe (XXVI)

8F5AA7

Named after one of the fifty daughters of Danaus, who was one of Zeus' lovers. She bore him a son, and was transformed by Zeus into a spring when she finally died.

Discovered in 2001 by Sheppard et al.

Group: Carme

Size: Tiny (4 km, 7.50×10^{13} kg)

Orbit: 750.13d (retrograde, inclined, very wide)



Location: Stairwell: on the bottom glazed panel of the left-hand door leading to the Argyll foyer area (where the disabled toilets are)

39

Eirene (LVII)

7ED5CE

One of Zeus and Themis' daughters, the Personification of Peace. The name was chosen by a contest on Twitter; Eirene won with only 16 votes, which leads one to suspect that first place was actually taken by something along the lines of "Moony McMoonface".

Discovered in 2003 by Sheppard et al.

Group: Carme

Size: Tiny (4 km, 9.00×10^{13} kg)

Orbit: 758.34d (retrograde, highly eccentric, inclined, very wide)



Location: Mezzanine: on the upper glazed panel at the right-hand side of the doors leading to the balcony area

40

Sinope (IX)

2E46CD



May be a D-type asteroid captured separately from the rest of its group. It is *periodically* in resonance with Jupiter. Named after a daughter of the river god Asopus, who was abducted by an amorous Zeus, but tricked him into granting her dearest wish: to remain a virgin forever.

Discovered in 1914 by Nicholson

Group: Pasiphae

Size: Small (38 km, 7.50×10^{16} kg)

Orbit: 739.33d (retrograde, eccentric, inclined, very wide)



Location: Games Room door sign

41

Autonoe (XXVIII)

4B6EA7



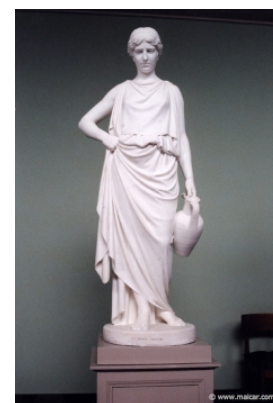
Named after another daughter of Cadmus, founder of Thebes, and Harmonia. Was one of the Bacchic mob that tore apart her father's peeping-top successor Pentheus (her nephew); her son Actaeon is famous for being eaten by his own hounds as punishment for accidentally catching Artemis naked.

Discovered in 2002 by Sheppard et al.

Group: Pasiphae

Size: Tiny (4 km, 9.00×10^{13} kg)

Orbit: 772.17d (retrograde, highly eccentric, inclined, very wide)



Location: Con Desk area: at the bottom of the leftmost window looking into the Dealers' Room

42

Megaclite (XIX)

5C6D90



Named after another of Zeus' conquests, who subsequently gave birth to Thebe and Lorcus (founders of one of the cities named Thebes).

Discovered in 2001 by Sheppard et al.

Group: Pasiphae

Size: Tiny (5 km, 2.10×10^{14} kg)

Orbit: 792.44d (retrograde, highly eccentric, inclined, very wide)

Location: Stairwell: just above the hand-rail at the right-hand side of the south-facing window

43

Light moons (various)

E4BE45

Ersa, Pandia,
Euporie, Eupheme,
Thelxinoe,
Orthosie, Mneme,
Herse, Kale,
Philophrosyne,
Kallichore,
Pasithee, Kore,
Cyllene, Sponde

A collection of moons weighing less than 1.5×10^{13} kg. Most were discovered around 2002 by Sheppard et al. or Gladman et al., and are in retrograde, irregular orbits (belonging to the Ananke, Carme, and Pasiphae groups).

However, two of the moons (Ersa and Pandia) were discovered in 2017-2018 (by Sheppard et al.) and sit in the prograde Himalia group.

They are mostly named after Nymphs, Goddesses, Horae, Muses, and Charites; all daughters or granddaughters of Zeus.

Location: Stairwell: on the upper face of the window "leading" on the right-hand side of the east-facing window

44

Nameless moons (various)

9E37A5

A collection of moons weighing less than 1.5×10^{13} kg, which have as yet not been assigned official names. They are all in retrograde, irregular orbits. Two were discovered in 2003 by Gladman et al., two in 2010 by Veillet and Jacobson et al., two in 2011 by Sheppard et al., and nine in 2016-2017 by Sheppard et al. They belong to the Ananke, Carme, and Pasiphae groups.

Location: Art Show: on the side of the table at the right-hand side as you came in

45

Lost moons (no designation)

4C8AFB

Seven moons were observed in 2003 and 2004 by Gladman et al. and Sheppard et al. All were very light ($< 1.5 \times 10^{13}$ kg), and sat in retrograde, irregular orbits in the Ananke, Carme, and Pasiphae groups.

However, their orbital elements were not always determined to high accuracy, and subsequent observations have failed to reacquire them. Occasional "lost" moons have been found again in time, however there is always the chance that they have been ejected from the system or collided with a larger moon, possibly to add to Jupiter's faint ring system.

Location: Ops: on the "Jupiter's Lost Moons" entry box